

Final Plat showing

Lots 62 - 66

Fernbank at Cress Creek

Shepherdstown District
Jefferson County, West Virginia

Developer:
Home Hill Corporation

JCPC APPROVAL

Paul J. Raco, Jefferson County Planning Director

Date:

June 1999

Prepared By:

Appalachian Surveys, Inc.
P.O. Box 35, Charles Town, West Virginia 25414

LEGEND

property corners to be set in rubber unless otherwise noted to be set concrete monument

percolation test

6" inspection pit

existing contour: 10'

existing contour: 2'

design contour as noted

storm drainage easement

10,000 sq.ft. septic reserve area

trees

street sign

stop sign

well

REVISIONS

NO.	REVISION	DATE

SURVEYOR'S CERTIFICATION

I hereby certify that this plat is correct and accurate to the best of my knowledge and that the relative error of closure exceeds 1: 7,800.

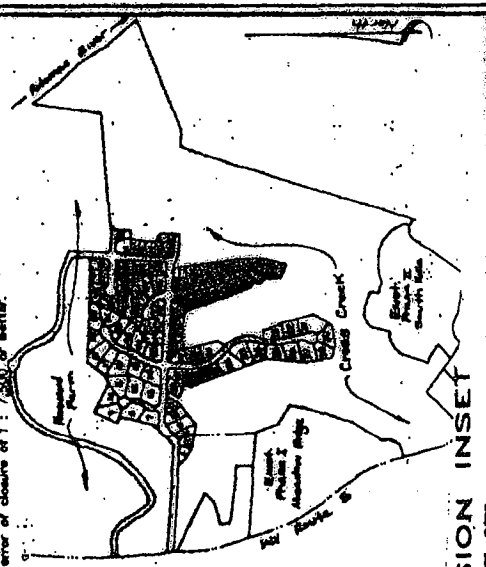
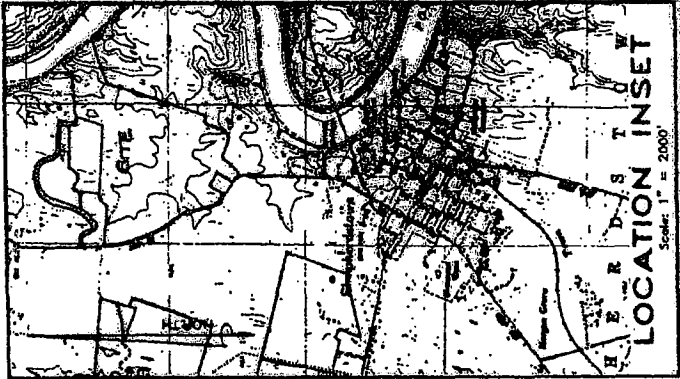
R. Michael Shroy, PS (304) 725-4572

STATEMENT OF ACCEPTANCE

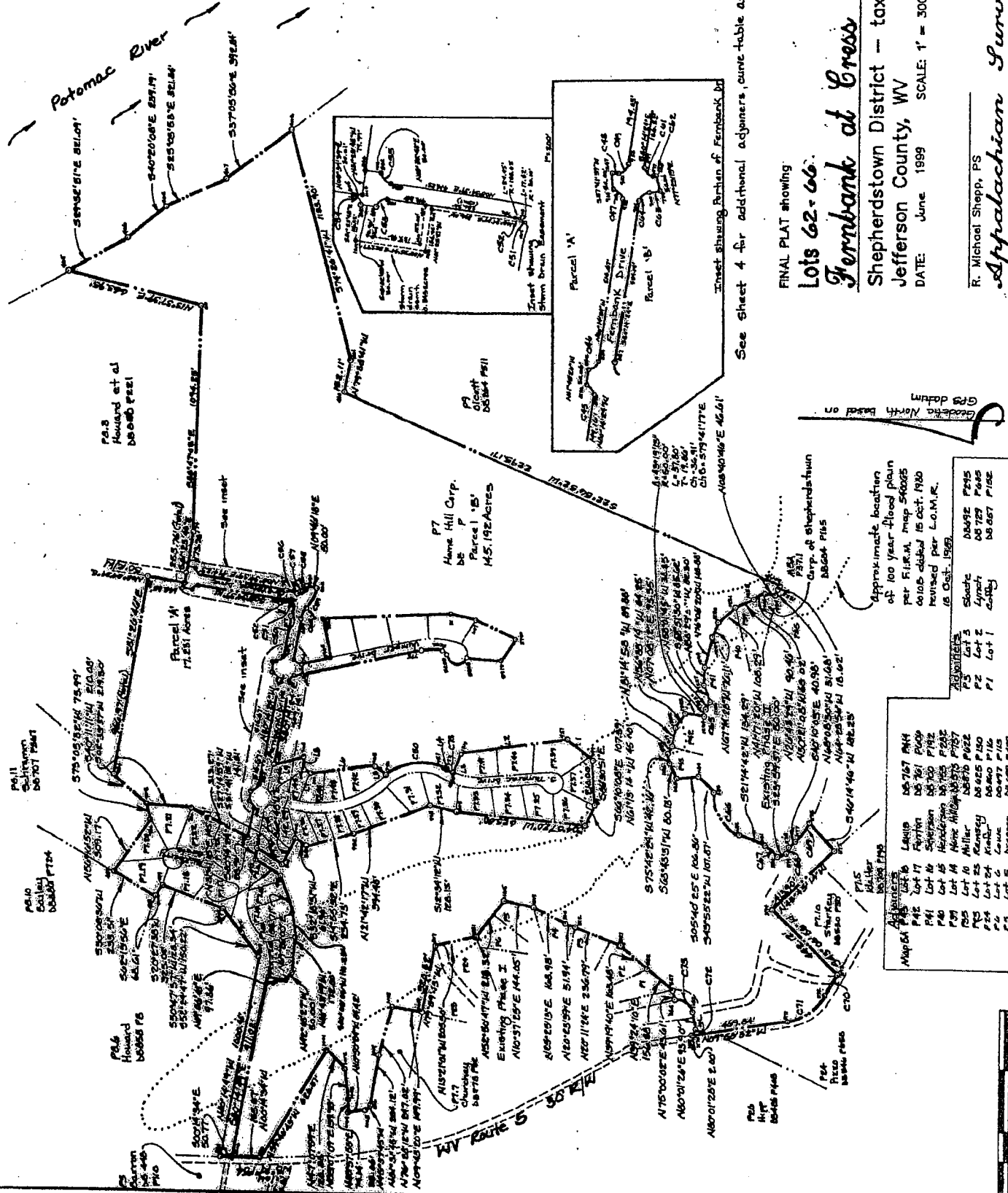
The developer, in signing this plat, agrees to abide by all conditions, terms, and specifications provided hereon.

Hank Walter for Home Hill Corporation
100 Cress Creek Drive
Shepherdstown, WV 25443
304-678-1260

The perimeter and all lot boundaries shown hereon have been established by a network of traverse control having a relative error of closure of 1: 7,500 or better.



SUBDIVISION INSET
SCALE: 1\"/>



FINAL PLAT showing

Lots 62-66.

Fernbank at Cress Creek.

Shepherdstown District - tax map 5
Jefferson County, WV

DATE: June 1999 SCALE: 1" = 300'

R. Michael Shepp, PS

Appalachian Surveys, Inc.
P.O. Box 35 Charles Town, WV 25414

See Sheet 4 for additional adjacers, curve table and line segment table.

Approximate location of 100 year flood plain per F.I.C.M. map 56026 00105 dated 15 Oct. 1980 revised per L.O.M.R. 16 Oct. 1989.

Map 56026	Lot #	Area	Acres
P1	Lot 1	08 067	0.195
P2	Lot 2	08 729	0.247
P3	Lot 3	08 492	0.235

Map 56026	Lot #	Area	Acres
P4	Lot 4	08 767	0.244
P5	Lot 5	08 625	0.176
P6	Lot 6	08 625	0.176
P7	Lot 7	08 625	0.176
P8	Lot 8	08 625	0.176
P9	Lot 9	08 625	0.176
P10	Lot 10	08 625	0.176
P11	Lot 11	08 625	0.176
P12	Lot 12	08 625	0.176
P13	Lot 13	08 625	0.176
P14	Lot 14	08 625	0.176
P15	Lot 15	08 625	0.176
P16	Lot 16	08 625	0.176
P17	Lot 17	08 625	0.176
P18	Lot 18	08 625	0.176
P19	Lot 19	08 625	0.176
P20	Lot 20	08 625	0.176
P21	Lot 21	08 625	0.176
P22	Lot 22	08 625	0.176
P23	Lot 23	08 625	0.176
P24	Lot 24	08 625	0.176
P25	Lot 25	08 625	0.176
P26	Lot 26	08 625	0.176
P27	Lot 27	08 625	0.176
P28	Lot 28	08 625	0.176
P29	Lot 29	08 625	0.176
P30	Lot 30	08 625	0.176
P31	Lot 31	08 625	0.176
P32	Lot 32	08 625	0.176
P33	Lot 33	08 625	0.176
P34	Lot 34	08 625	0.176
P35	Lot 35	08 625	0.176
P36	Lot 36	08 625	0.176
P37	Lot 37	08 625	0.176
P38	Lot 38	08 625	0.176
P39	Lot 39	08 625	0.176
P40	Lot 40	08 625	0.176
P41	Lot 41	08 625	0.176
P42	Lot 42	08 625	0.176
P43	Lot 43	08 625	0.176
P44	Lot 44	08 625	0.176
P45	Lot 45	08 625	0.176
P46	Lot 46	08 625	0.176
P47	Lot 47	08 625	0.176
P48	Lot 48	08 625	0.176
P49	Lot 49	08 625	0.176
P50	Lot 50	08 625	0.176
P51	Lot 51	08 625	0.176
P52	Lot 52	08 625	0.176
P53	Lot 53	08 625	0.176
P54	Lot 54	08 625	0.176
P55	Lot 55	08 625	0.176
P56	Lot 56	08 625	0.176
P57	Lot 57	08 625	0.176
P58	Lot 58	08 625	0.176
P59	Lot 59	08 625	0.176
P60	Lot 60	08 625	0.176
P61	Lot 61	08 625	0.176
P62	Lot 62	08 625	0.176
P63	Lot 63	08 625	0.176
P64	Lot 64	08 625	0.176
P65	Lot 65	08 625	0.176
P66	Lot 66	08 625	0.176



7.46
7.17
7.16
7.19
7.20
7.21
7.22
7.23
7.24
7.25
7.26
7.27
7.28
7.29
7.30
7.31
7.32
7.33
7.34
7.35
7.36
7.37
7.38
7.39
7.40
7.41
7.42
7.43
7.44
7.45
7.46

7.46
7.17
7.16
7.19
7.20
7.21
7.22
7.23
7.24
7.25
7.26
7.27
7.28
7.29
7.30
7.31
7.32
7.33
7.34
7.35
7.36
7.37
7.38
7.39
7.40
7.41
7.42
7.43
7.44
7.45
7.46

901
900
920
914
857
923
923
904
927
904
907
901
903
944
947
944
610
610
610
610

MHH LLC
MHH Corporation
Home Hill Corporation
Smith
Price
Burnes
Home Hill Corporation
Home Hill Corporation
MHH LLC
MHH LLC
MHH LLC
Home Hill Corporation
MHH LLC
MHH LLC
Home Hill Corporation
Home Hill Corporation
Home Hill Corporation
Home Hill Corporation
Home Hill Corporation
Home Hill Corporation
Home Hill Corporation
Home Hill Corporation
Home Hill Corporation

MHH LLC
MHH Corporation
Home Hill Corporation
Smith
Price
Burnes
Home Hill Corporation
Home Hill Corporation
MHH LLC
MHH LLC
MHH LLC
Home Hill Corporation
Home Hill Corporation
Home Hill Corporation
Home Hill Corporation
Home Hill Corporation
Home Hill Corporation
Home Hill Corporation
Home Hill Corporation
Home Hill Corporation
Home Hill Corporation
Home Hill Corporation
Home Hill Corporation

MHH LLC
MHH Corporation
Home Hill Corporation
Smith
Price
Burnes
Home Hill Corporation
Home Hill Corporation
MHH LLC
MHH LLC
MHH LLC
Home Hill Corporation
Home Hill Corporation
Home Hill Corporation
Home Hill Corporation
Home Hill Corporation
Home Hill Corporation
Home Hill Corporation
Home Hill Corporation
Home Hill Corporation
Home Hill Corporation
Home Hill Corporation
Home Hill Corporation

901
900
920
914
857
923
923
904
927
904
907
901
903
944
947
944
610
610
610
610

Lot	Area (sq. ft.)	Owner	Acres
C1	36,837	MHH LLC	0.83
C2	36,837	MHH Corporation	0.83
C3	36,837	Home Hill Corporation	0.83
C4	36,837	Smith	0.83
C5	36,837	Price	0.83
C6	36,837	Burnes	0.83
C7	36,837	Home Hill Corporation	0.83
C8	36,837	Home Hill Corporation	0.83
C9	36,837	MHH LLC	0.83
C10	36,837	MHH LLC	0.83
C11	36,837	MHH LLC	0.83
C12	36,837	Home Hill Corporation	0.83
C13	36,837	Home Hill Corporation	0.83
C14	36,837	Home Hill Corporation	0.83
C15	36,837	Home Hill Corporation	0.83
C16	36,837	Home Hill Corporation	0.83
C17	36,837	Home Hill Corporation	0.83
C18	36,837	Home Hill Corporation	0.83
C19	36,837	Home Hill Corporation	0.83
C20	36,837	Home Hill Corporation	0.83
C21	36,837	Home Hill Corporation	0.83
C22	36,837	Home Hill Corporation	0.83
C23	36,837	Home Hill Corporation	0.83
C24	36,837	Home Hill Corporation	0.83
C25	36,837	Home Hill Corporation	0.83
C26	36,837	Home Hill Corporation	0.83
C27	36,837	Home Hill Corporation	0.83
C28	36,837	Home Hill Corporation	0.83
C29	36,837	Home Hill Corporation	0.83
C30	36,837	Home Hill Corporation	0.83
C31	36,837	Home Hill Corporation	0.83
C32	36,837	Home Hill Corporation	0.83
C33	36,837	Home Hill Corporation	0.83
C34	36,837	Home Hill Corporation	0.83
C35	36,837	Home Hill Corporation	0.83
C36	36,837	Home Hill Corporation	0.83
C37	36,837	Home Hill Corporation	0.83
C38	36,837	Home Hill Corporation	0.83
C39	36,837	Home Hill Corporation	0.83
C40	36,837	Home Hill Corporation	0.83
C41	36,837	Home Hill Corporation	0.83
C42	36,837	Home Hill Corporation	0.83
C43	36,837	Home Hill Corporation	0.83
C44	36,837	Home Hill Corporation	0.83
C45	36,837	Home Hill Corporation	0.83
C46	36,837	Home Hill Corporation	0.83
C47	36,837	Home Hill Corporation	0.83
C48	36,837	Home Hill Corporation	0.83
C49	36,837	Home Hill Corporation	0.83
C50	36,837	Home Hill Corporation	0.83
C51	36,837	Home Hill Corporation	0.83
C52	36,837	Home Hill Corporation	0.83
C53	36,837	Home Hill Corporation	0.83
C54	36,837	Home Hill Corporation	0.83
C55	36,837	Home Hill Corporation	0.83
C56	36,837	Home Hill Corporation	0.83
C57	36,837	Home Hill Corporation	0.83
C58	36,837	Home Hill Corporation	0.83
C59	36,837	Home Hill Corporation	0.83
C60	36,837	Home Hill Corporation	0.83
C61	36,837	Home Hill Corporation	0.83
C62	36,837	Home Hill Corporation	0.83
C63	36,837	Home Hill Corporation	0.83
C64	36,837	Home Hill Corporation	0.83
C65	36,837	Home Hill Corporation	0.83
C66	36,837	Home Hill Corporation	0.83
C67	36,837	Home Hill Corporation	0.83
C68	36,837	Home Hill Corporation	0.83
C69	36,837	Home Hill Corporation	0.83
C70	36,837	Home Hill Corporation	0.83
C71	36,837	Home Hill Corporation	0.83
C72	36,837	Home Hill Corporation	0.83
C73	36,837	Home Hill Corporation	0.83
C74	36,837	Home Hill Corporation	0.83
C75	36,837	Home Hill Corporation	0.83
C76	36,837	Home Hill Corporation	0.83

FINAL PLAT showing
 Lots 62 - 66
Fernbank at Cress Creek
 Shepherdstown District - map 5
 Jefferson County, WV
 DATE: June 1999

Appalachian Surveys, Inc.
 P.O. Box 35 Charles Town, WV 25414
 45700

Sheet 4 of 4