

Final Plat showing

Lots D87 - D90

Fernbank at Cress Creek

Shepherdstown District
Jefferson County, West Virginia

Developer:
Home Hill Corporation

JCPC APPROVAL

Paul J. Raco, Jefferson County Planning Director Date: _____

July 2000

Prepared By:

Appalachian Surveys of West Virginia, LLC
P.O. Box 35, Charles Town, West Virginia 25414

- ### LEGEND
- property corner to be set by rebar unless otherwise noted
 - to be set concrete monument
 - ⊕ percolation test
 - ⊕ inspection pit
 - ⊕ existing contour 10'
 - ⊕ existing contour 2'
 - ⊕ design contour as noted
 - ⊕ storm drainage easement
 - ⊕ 10,000 sq.ft. septic reserve area
 - trees
 - street sign
 - stop sign
 - well

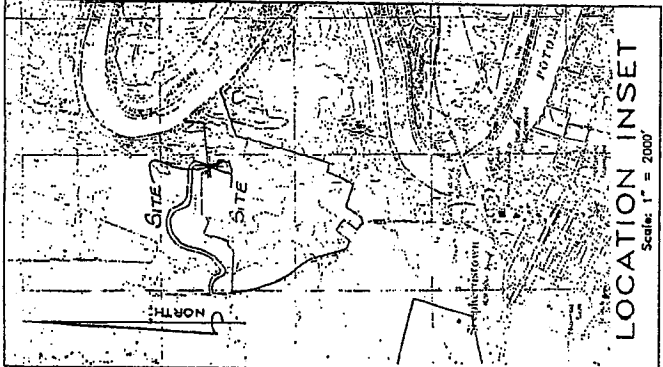
REVISIONS

NO.	DATE	DESCRIPTION
1	2-7-00	REVISED PER JCPC
2	2-7-00	

STATEMENT OF ACCEPTANCE

The developer, in signing this plat, agrees to abide by all conditions, terms, and specifications provided hereon.

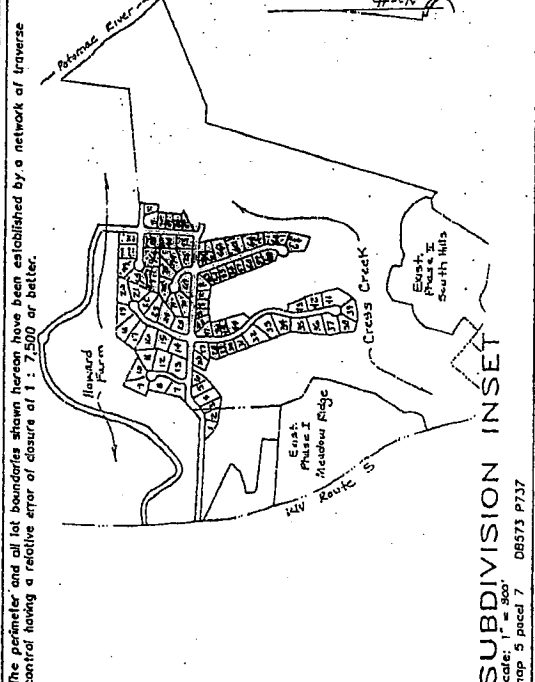
Hank Walter for Home Hill Corp.
100 Cress Creek Drive
Shepherdstown, WV 25443
304-876-3375



SURVEYOR'S CERTIFICATION

I hereby certify that this plat is correct and accurate to the best of my knowledge and that the relative error of closure exceeds 1 : 7,500.

R. Michael Shepp, PS (304) 725-1572

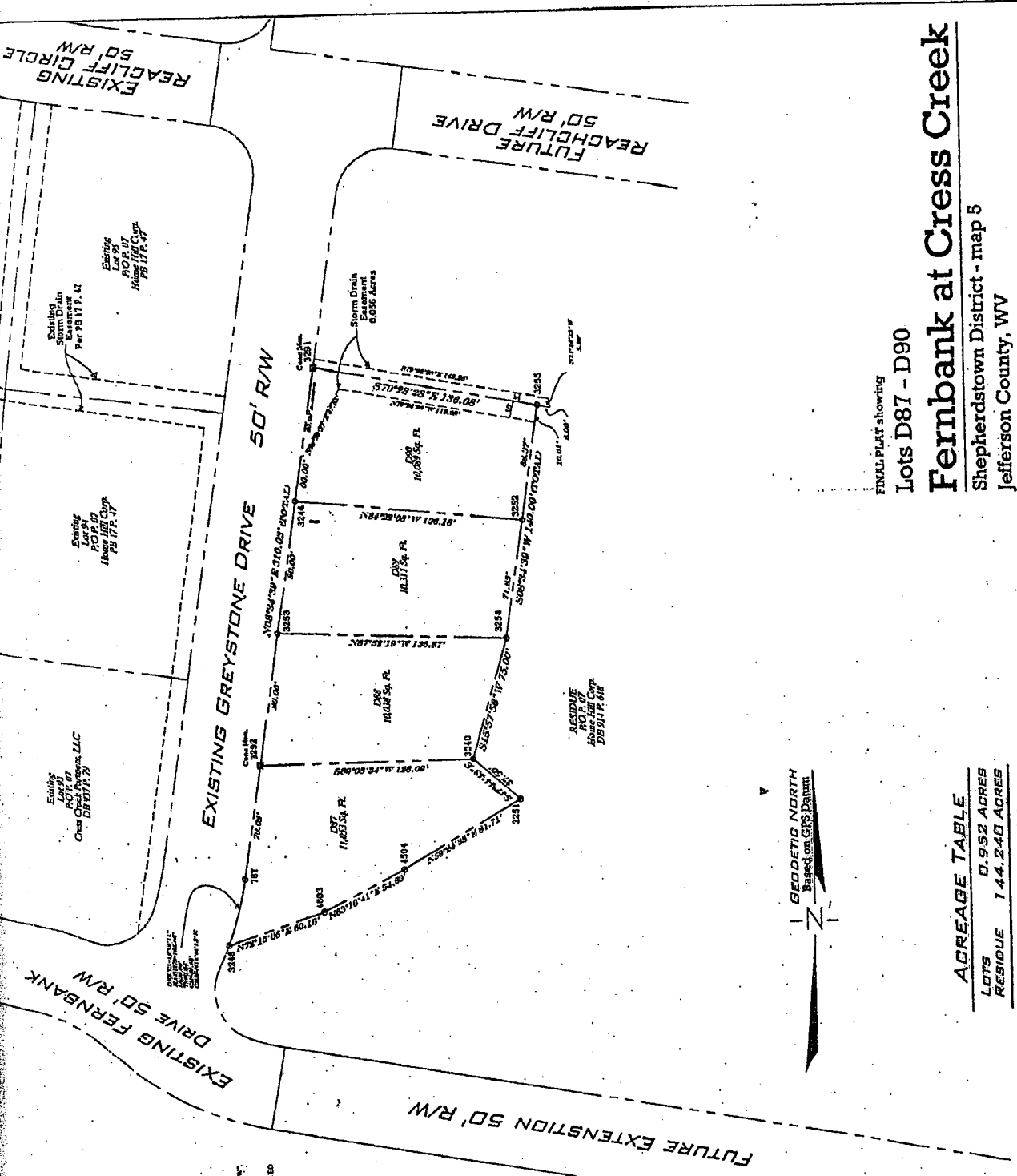


SUBDIVISION INSET

Scale: 1" = 800'
map 5 parcel 7 08573 P737

The perimeter and all lot boundaries shown hereon have been established by a network of traverse control having a relative error of closure of 1 : 7,500 or better.

1. THE PROJECTOR HAS REVIEWED THE RECORD PLANS, SURVEY DATA, AND ALL RECORDS AND PLANS ON FILE AT THE OFFICE OF THE ENGINEER AND HAS FOUND THEM TO BE IN ACCORDANCE WITH THE REQUIREMENTS OF THE ENGINEERING ACT AND THE SUBDIVISION ACT.
2. ALL LOTS ARE BOUND BY THE PROPOSED SUBDIVISION LINES AND ARE NOT SUBJECT TO ANY OTHER EASEMENTS OR ENCUMBRANCES.
3. THE PROJECTOR HAS REVIEWED THE RECORD PLANS AND HAS FOUND THEM TO BE IN ACCORDANCE WITH THE REQUIREMENTS OF THE ENGINEERING ACT AND THE SUBDIVISION ACT.
4. THE PROJECTOR HAS REVIEWED THE RECORD PLANS AND HAS FOUND THEM TO BE IN ACCORDANCE WITH THE REQUIREMENTS OF THE ENGINEERING ACT AND THE SUBDIVISION ACT.
5. THE PROJECTOR HAS REVIEWED THE RECORD PLANS AND HAS FOUND THEM TO BE IN ACCORDANCE WITH THE REQUIREMENTS OF THE ENGINEERING ACT AND THE SUBDIVISION ACT.
6. THE PROJECTOR HAS REVIEWED THE RECORD PLANS AND HAS FOUND THEM TO BE IN ACCORDANCE WITH THE REQUIREMENTS OF THE ENGINEERING ACT AND THE SUBDIVISION ACT.
7. THE PROJECTOR HAS REVIEWED THE RECORD PLANS AND HAS FOUND THEM TO BE IN ACCORDANCE WITH THE REQUIREMENTS OF THE ENGINEERING ACT AND THE SUBDIVISION ACT.
8. THE PROJECTOR HAS REVIEWED THE RECORD PLANS AND HAS FOUND THEM TO BE IN ACCORDANCE WITH THE REQUIREMENTS OF THE ENGINEERING ACT AND THE SUBDIVISION ACT.
9. THE PROJECTOR HAS REVIEWED THE RECORD PLANS AND HAS FOUND THEM TO BE IN ACCORDANCE WITH THE REQUIREMENTS OF THE ENGINEERING ACT AND THE SUBDIVISION ACT.
10. THE PROJECTOR HAS REVIEWED THE RECORD PLANS AND HAS FOUND THEM TO BE IN ACCORDANCE WITH THE REQUIREMENTS OF THE ENGINEERING ACT AND THE SUBDIVISION ACT.
11. THE PROJECTOR HAS REVIEWED THE RECORD PLANS AND HAS FOUND THEM TO BE IN ACCORDANCE WITH THE REQUIREMENTS OF THE ENGINEERING ACT AND THE SUBDIVISION ACT.
12. THE PROJECTOR HAS REVIEWED THE RECORD PLANS AND HAS FOUND THEM TO BE IN ACCORDANCE WITH THE REQUIREMENTS OF THE ENGINEERING ACT AND THE SUBDIVISION ACT.
13. THE PROJECTOR HAS REVIEWED THE RECORD PLANS AND HAS FOUND THEM TO BE IN ACCORDANCE WITH THE REQUIREMENTS OF THE ENGINEERING ACT AND THE SUBDIVISION ACT.
14. THE PROJECTOR HAS REVIEWED THE RECORD PLANS AND HAS FOUND THEM TO BE IN ACCORDANCE WITH THE REQUIREMENTS OF THE ENGINEERING ACT AND THE SUBDIVISION ACT.
15. THE PROJECTOR HAS REVIEWED THE RECORD PLANS AND HAS FOUND THEM TO BE IN ACCORDANCE WITH THE REQUIREMENTS OF THE ENGINEERING ACT AND THE SUBDIVISION ACT.
16. THE PROJECTOR HAS REVIEWED THE RECORD PLANS AND HAS FOUND THEM TO BE IN ACCORDANCE WITH THE REQUIREMENTS OF THE ENGINEERING ACT AND THE SUBDIVISION ACT.
17. THE PROJECTOR HAS REVIEWED THE RECORD PLANS AND HAS FOUND THEM TO BE IN ACCORDANCE WITH THE REQUIREMENTS OF THE ENGINEERING ACT AND THE SUBDIVISION ACT.



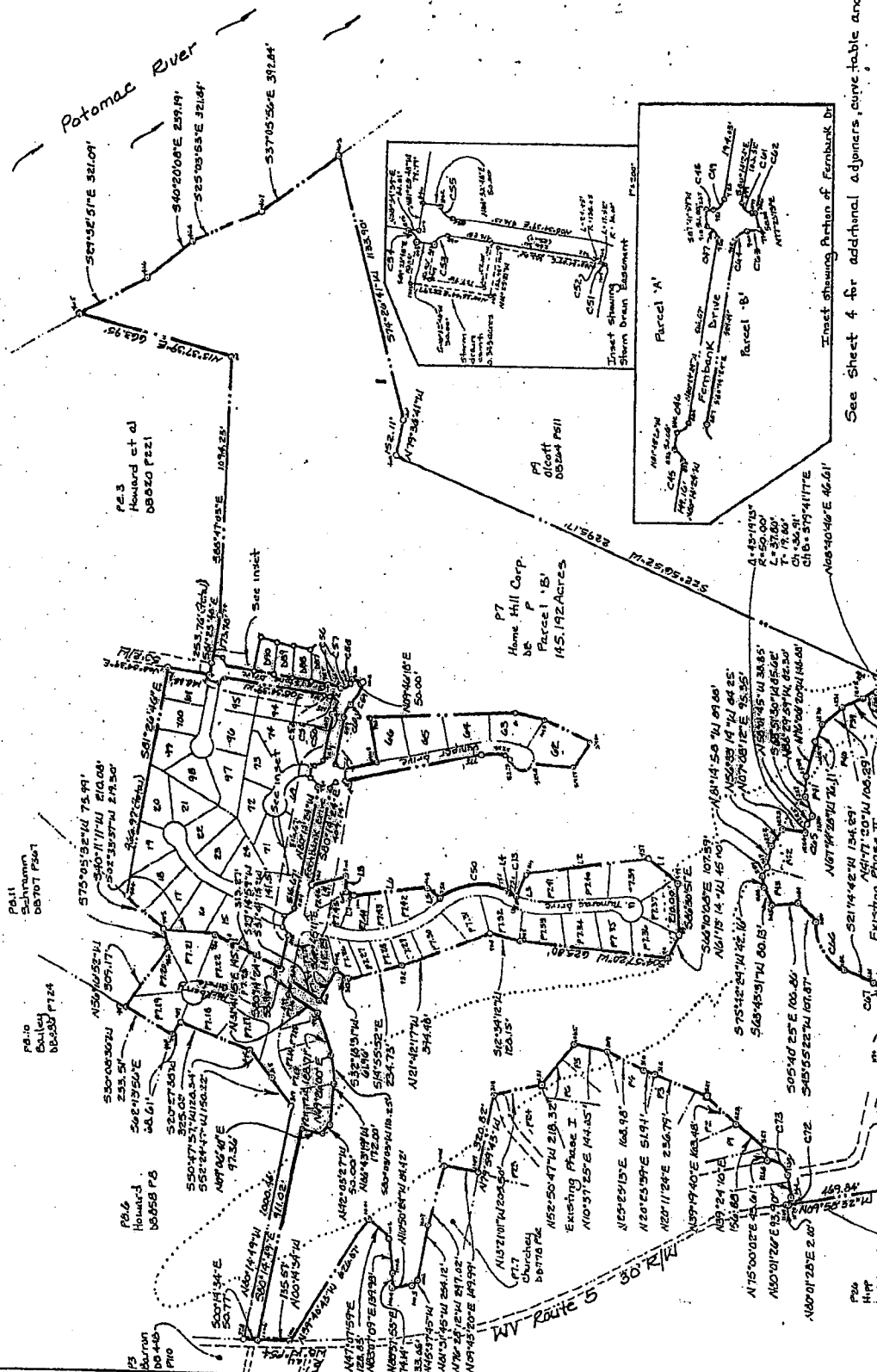
FINAL PLAN showing
Lots D87 - D90
Fernbank at Cress Creek
 Shepherdstown District - map 5
 Jefferson County, WV
 DATE: July 2000 SCALE: 1" = 40'
Appalachian Surveys of West Virginia, LLC
 P.O. Box 35 Charles Town, WV 25814 43700

ACREAGE TABLE

LOTS	0.952 ACRES
RESIDUE	144.240 ACRES
TOTAL AREA	145.192 ACRES



RK



FINAL PLAT showing
Lots D87 - D90
Fennbank at Cross Creek
 Shepherdstown District - tax map 5
 Jefferson County, WV
 DATE: July 2000 SCALE: 1" = 300'

R. Michael Shepp, PS
Appalachian Surveys, Inc.
 P.O. Box 35 Charles Town, WV 25414

See Sheet 4 for additional adjacent owners, curve table and line segment table.

GRS datum
 Geographic North based on

Approximate location
 of 100 year flood plain
 per F.I.E.M. map S-40065
 curve dated 15 Oct. 1980
 revised per L.O.M.R.
 18 Oct. 1985.

AS 1910225	AS 092	PS 95
73	Lot 3	SW 1/4
72	Lot 2	SW 1/4
71	Lot 1	SW 1/4

Map 5A	Lot	Owner
P45	Lot 6	Leahy
P46	Lot 7	Fenton
P47	Lot 8	Swenson
P48	Lot 9	Hardison
P49	Lot 10	Home Hill
P50	Lot 11	Miller
P51	Lot 12	Kenny
P52	Lot 13	Kelly
P53	Lot 14	Lowe
P54	Lot 15	Brannon
P55	Lot 16	Miller



