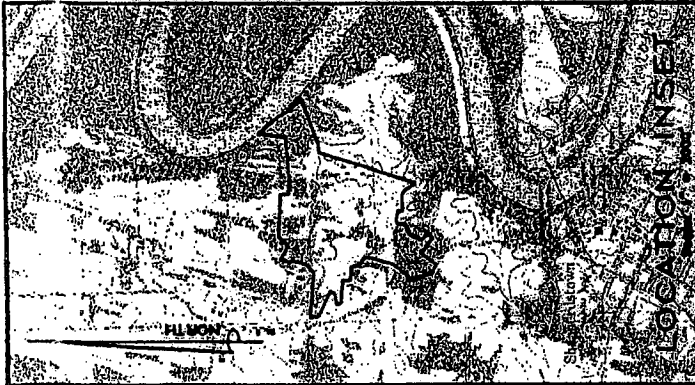


LEGEND

- Property shown to be not of record
- Property shown to be not currently zoned
- Precinct boundary
- + Impassible pt
- Utility markers 10'
- Utility markers 2'
- Design markers on notes
- Storm drainage easement
- Street sign
- City sign
- Well



REVISIONS

NO.	DATE	DESCRIPTION

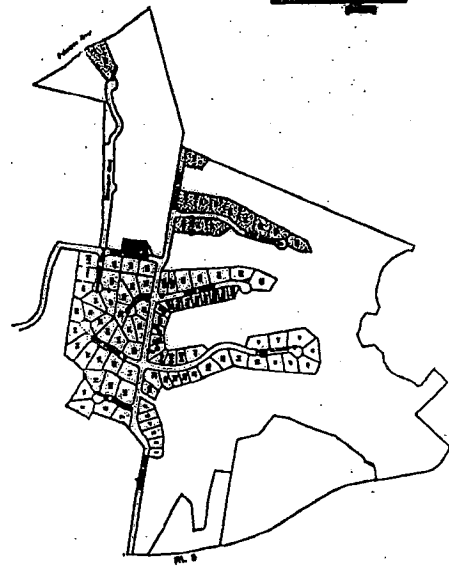
SURVEYOR'S CERTIFICATION

The perimeter and all lot boundaries shown herein were established by a network of traverse control having a relative error of closure of 1 : 7,500 or better.

Karen E. Baglin, PS
Appalachian Surveys of WV, LLC
(304) 728-6572

Home Hill Corporation
100 South Main Street
Martinsburg, WV 25403
(304) 476-1260

STATEMENT OF ACCEPTANCE
The developer, in signing this plan, agrees to abide by all conditions, terms, and specifications provided herein.



SUBDIVISION INSET

Final Plat showing

Lots 76-84, 102, 103, 115, 118

FERNBANK at CRESS CREEK

Shepherdstown District
Jefferson County, West Virginia

Developer:
Home Hill Corporation

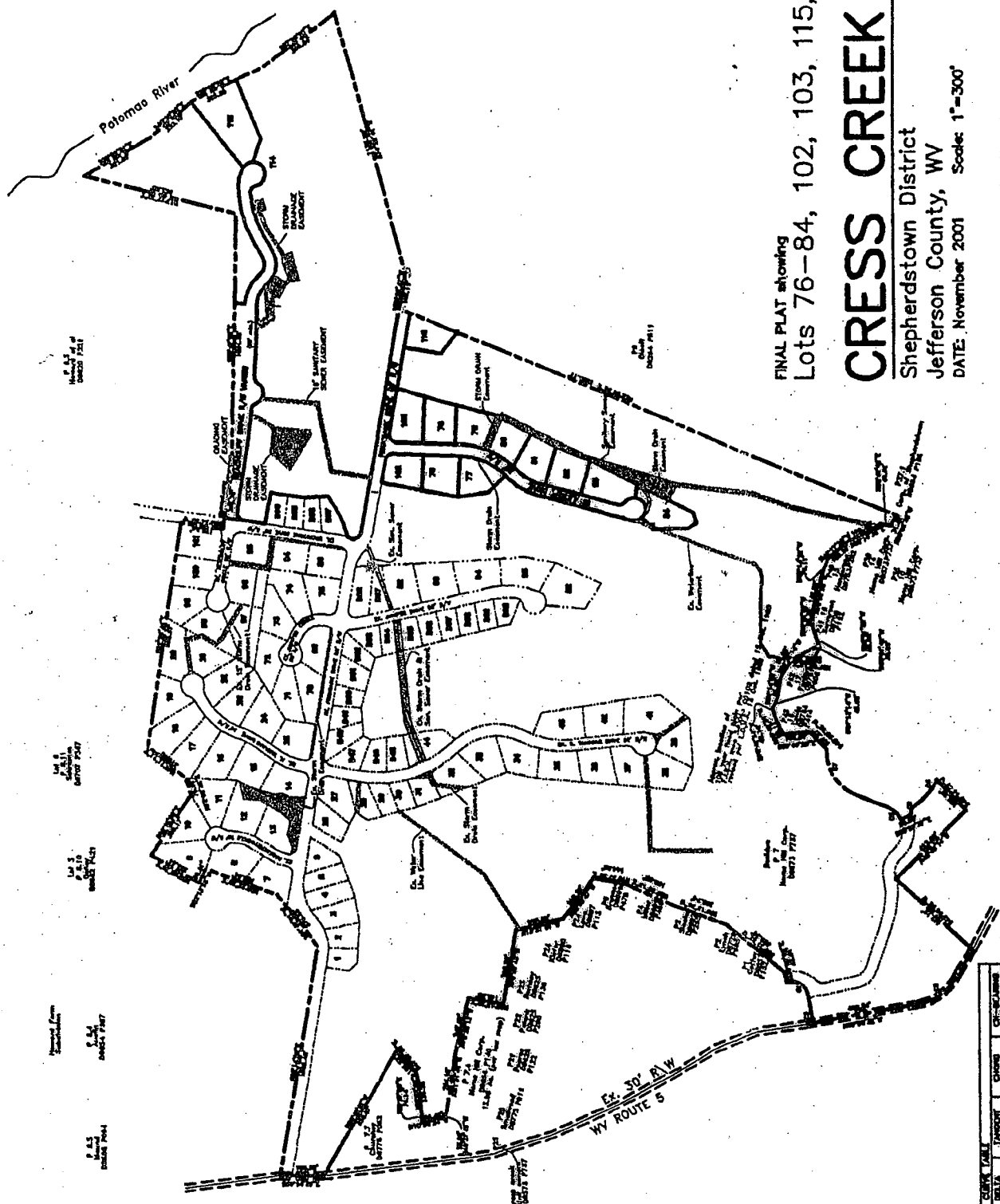
JCPC APPROVAL

	Date: _____
<small>Stephen R. Beckwith, Chief Planner Jefferson County Planning, Zoning and Engineering</small>	

November 2001

Prepared By:

Appalachian Surveys of West Virginia, LLC
411 Fairfax Blvd., Ranson, West Virginia 25438
P.O. Box 35, Charles Town, West Virginia 25414



FINAL PLAT showing
 Lots 76-84, 102, 103, 115, 118

CRESS CREEK

Shepherdstown District
 Jefferson County, WV

DATE: November 2001 Scale: 1"=300'

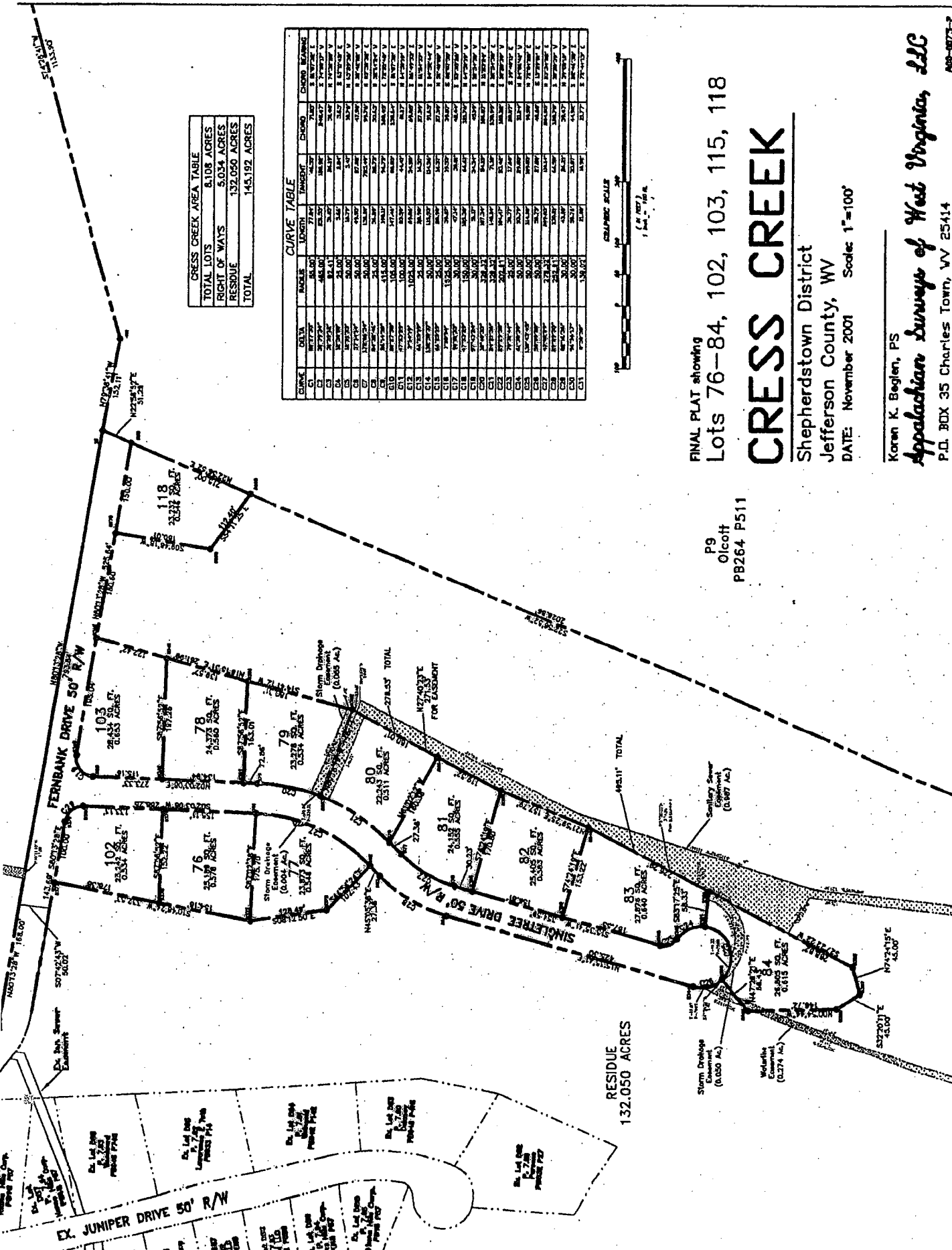
Karen K. Beglen, PS

Appalachian Surveys of West Virginia, LLC

P.O. BOX 35 Charles Town, WV 25414

400-875-E

CURVE	RADIUS		CHORD		TANGENT		CHORD BEHIND	
	LENGTH	ANGLE	LENGTH	ANGLE	LENGTH	ANGLE	LENGTH	ANGLE
C1	115.24	78.74	84.11	101.74	101.74	101.74	101.74	101.74
C2	38.38	25.08	28.28	33.74	33.74	33.74	33.74	33.74
C3	114.42	84.68	84.68	101.74	101.74	101.74	101.74	101.74
C4	92.31	65.08	65.08	78.74	78.74	78.74	78.74	78.74
C5	81.84	56.58	47.42	56.58	56.58	56.58	56.58	56.58
C6	252.53	202.00	161.00	192.00	192.00	192.00	192.00	192.00
C7	27.60	20.00	17.60	20.00	20.00	20.00	20.00	20.00



CRESS CREEK AREA TABLE	
TOTAL LOTS	8,108 ACRES
RIGHT OF WAYS	5,034 ACRES
RESIDUE	132,050 ACRES
TOTAL	145,192 ACRES

CURVE	DELTA	ANGLE	LENGTH	TANGENT	CHORD	CHORD BEARING
C1	87.7737°	85.00'	71.84'	45.57'	78.87'	S 81.77° E
C2	21.7737°	486.00'	108.87'	108.87'	346.07'	S 17.77° W
C3	87.7737°	24.41'	3.44'	2.14'	3.44'	S 87.77° W
C4	87.7737°	30.00'	15.37'	9.57'	18.72'	S 87.77° W
C5	87.7737°	30.00'	15.37'	9.57'	18.72'	S 87.77° W
C6	87.7737°	30.00'	15.37'	9.57'	18.72'	S 87.77° W
C7	87.7737°	30.00'	15.37'	9.57'	18.72'	S 87.77° W
C8	87.7737°	30.00'	15.37'	9.57'	18.72'	S 87.77° W
C9	87.7737°	30.00'	15.37'	9.57'	18.72'	S 87.77° W
C10	87.7737°	30.00'	15.37'	9.57'	18.72'	S 87.77° W
C11	87.7737°	30.00'	15.37'	9.57'	18.72'	S 87.77° W
C12	87.7737°	30.00'	15.37'	9.57'	18.72'	S 87.77° W
C13	87.7737°	30.00'	15.37'	9.57'	18.72'	S 87.77° W
C14	87.7737°	30.00'	15.37'	9.57'	18.72'	S 87.77° W
C15	87.7737°	30.00'	15.37'	9.57'	18.72'	S 87.77° W
C16	87.7737°	30.00'	15.37'	9.57'	18.72'	S 87.77° W
C17	87.7737°	30.00'	15.37'	9.57'	18.72'	S 87.77° W
C18	87.7737°	30.00'	15.37'	9.57'	18.72'	S 87.77° W
C19	87.7737°	30.00'	15.37'	9.57'	18.72'	S 87.77° W
C20	87.7737°	30.00'	15.37'	9.57'	18.72'	S 87.77° W
C21	87.7737°	30.00'	15.37'	9.57'	18.72'	S 87.77° W
C22	87.7737°	30.00'	15.37'	9.57'	18.72'	S 87.77° W
C23	87.7737°	30.00'	15.37'	9.57'	18.72'	S 87.77° W
C24	87.7737°	30.00'	15.37'	9.57'	18.72'	S 87.77° W
C25	87.7737°	30.00'	15.37'	9.57'	18.72'	S 87.77° W
C26	87.7737°	30.00'	15.37'	9.57'	18.72'	S 87.77° W
C27	87.7737°	30.00'	15.37'	9.57'	18.72'	S 87.77° W
C28	87.7737°	30.00'	15.37'	9.57'	18.72'	S 87.77° W
C29	87.7737°	30.00'	15.37'	9.57'	18.72'	S 87.77° W
C30	87.7737°	30.00'	15.37'	9.57'	18.72'	S 87.77° W
C31	87.7737°	30.00'	15.37'	9.57'	18.72'	S 87.77° W



FINAL PLAT showing
 Lots 76-84, 102, 103, 115, 118

CRESS CREEK

Shepherdstown District
 Jefferson County, WV
 DATE: November 2001 Scale: 1"=100'

P9
 Olcott
 PB264 P511

Karen K. Beglen, PS
Appalachian Surveys of West Virginia, LLC
 P.O. BOX 35 Charles Town, WV 25414
 WV-0673-2